

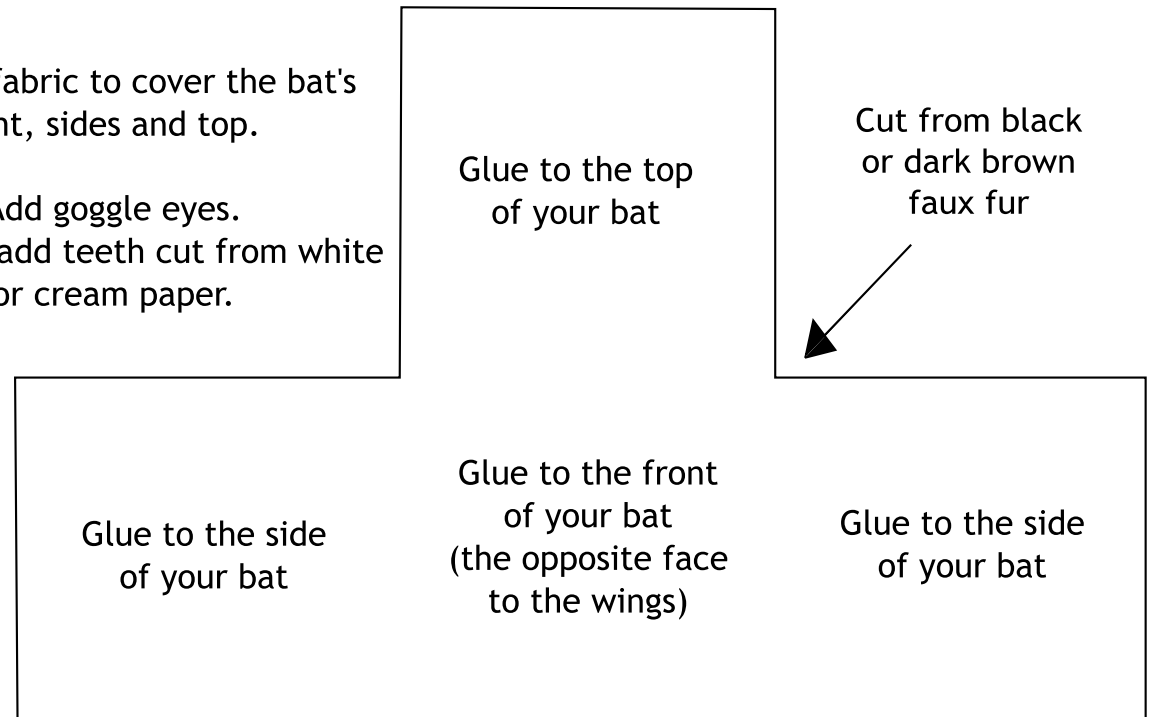
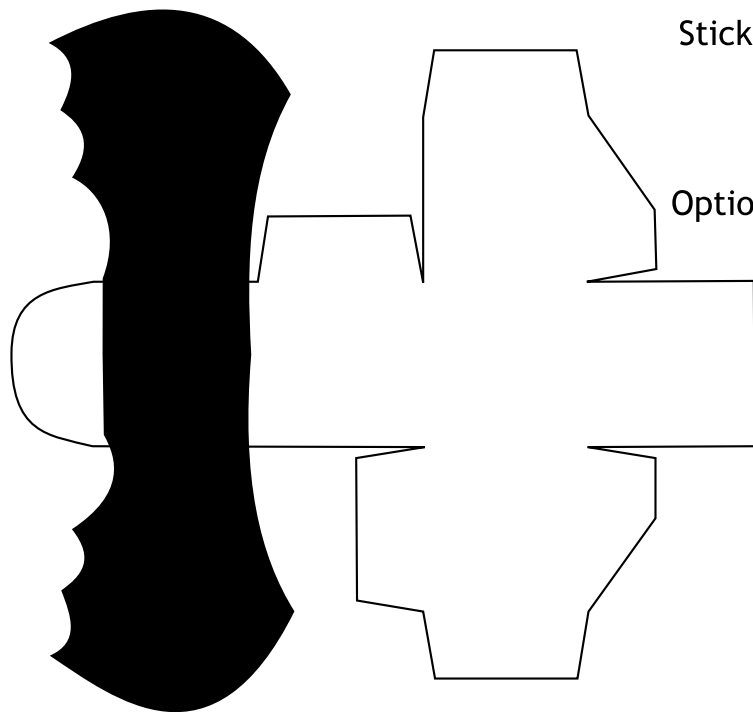
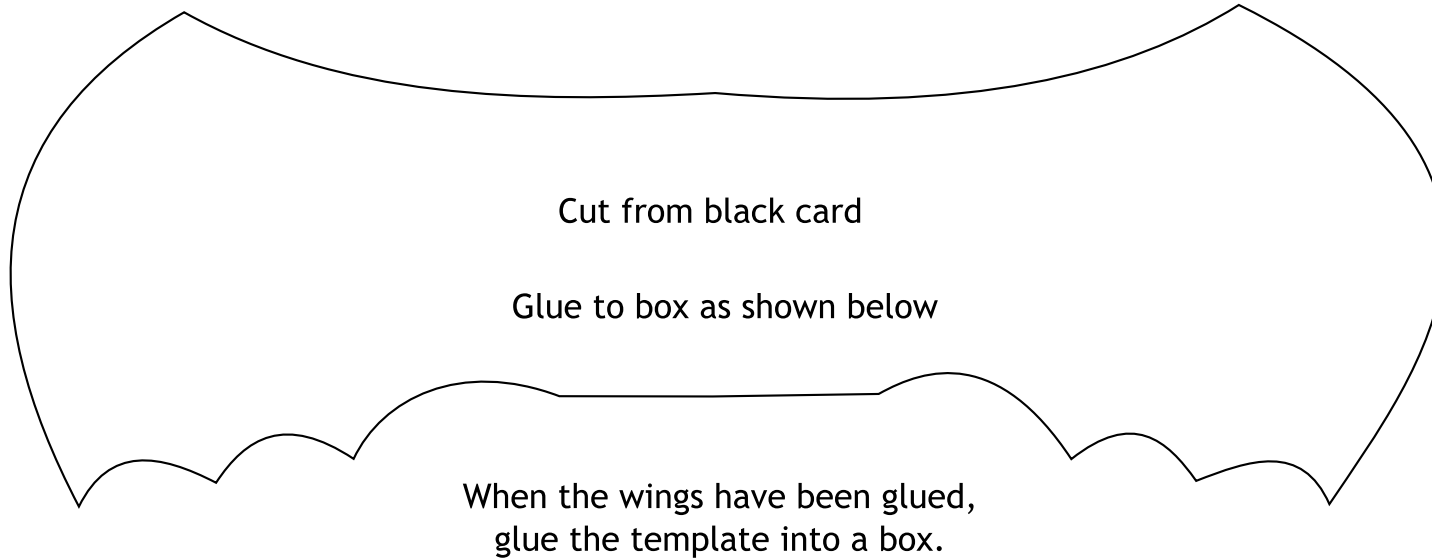
# Template for Bat Box

Tip: Choosing the right glue for each job will make this activity much easier.

When sticking card or paper use a glue stick (e.g. Pritt Stick).

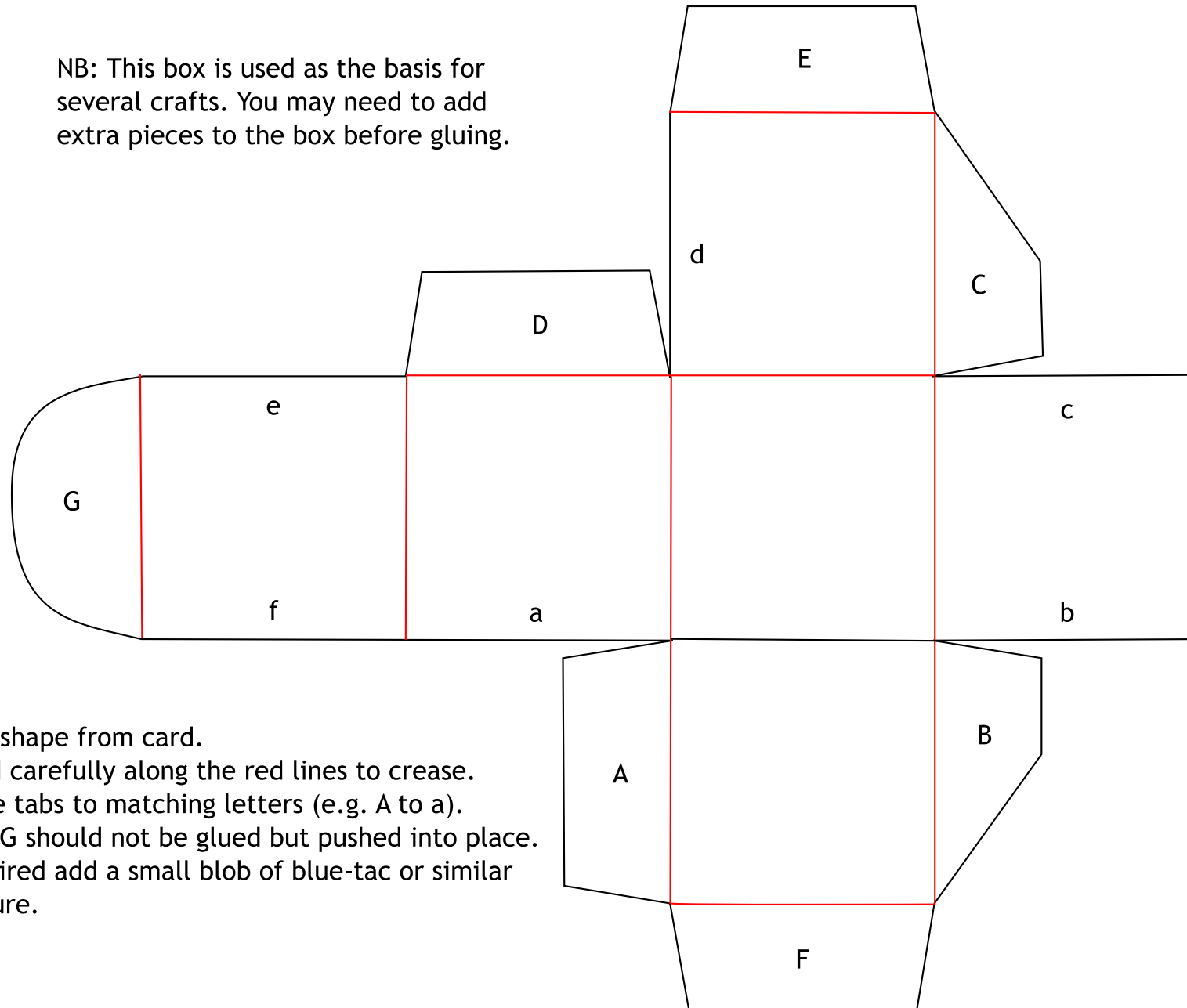
When sticking fur fabric use a glue that will stick fabric (e.g. Copydex).

When sticking goggle eyes to fur fabric use a tacky glue (e.g. Tacky PVA).



# Template for Secret Keeper Box

NB: This box is used as the basis for several crafts. You may need to add extra pieces to the box before gluing.



- 1) Cut shape from card.
- 2) Fold carefully along the red lines to crease.
- 3) Glue tabs to matching letters (e.g. A to a).
- 4) Tab G should not be glued but pushed into place. If required add a small blob of blue-tac or similar to secure.

