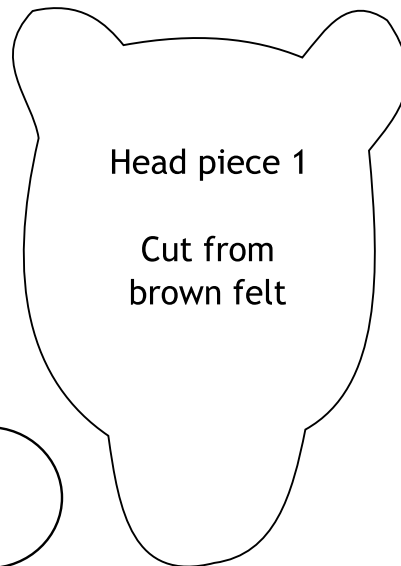
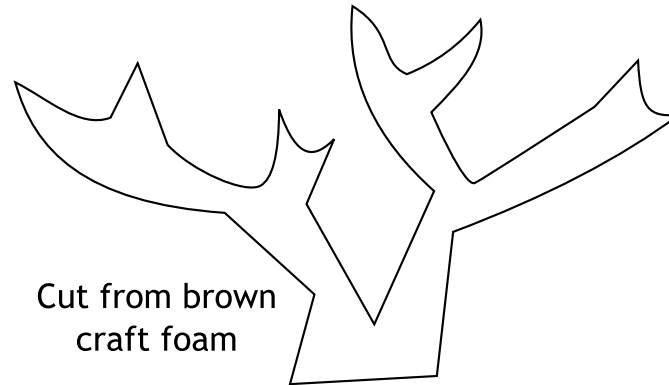
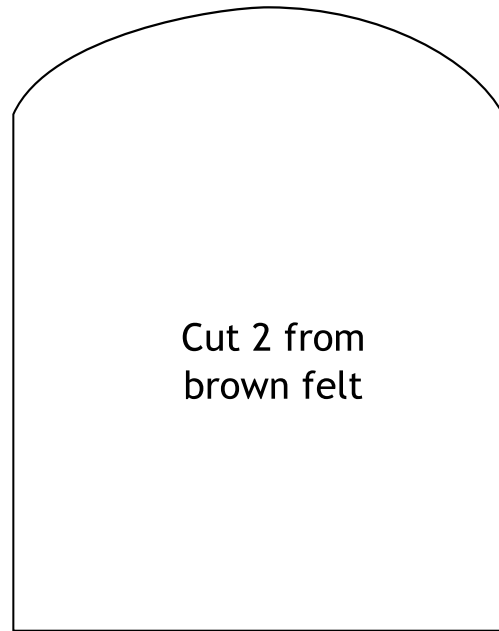
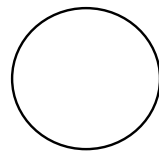
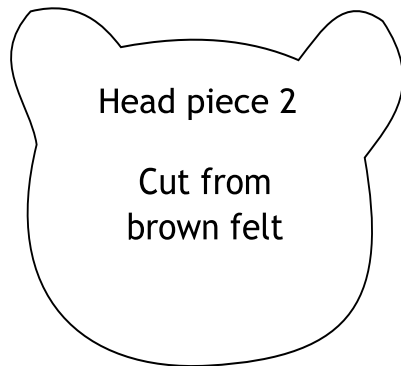


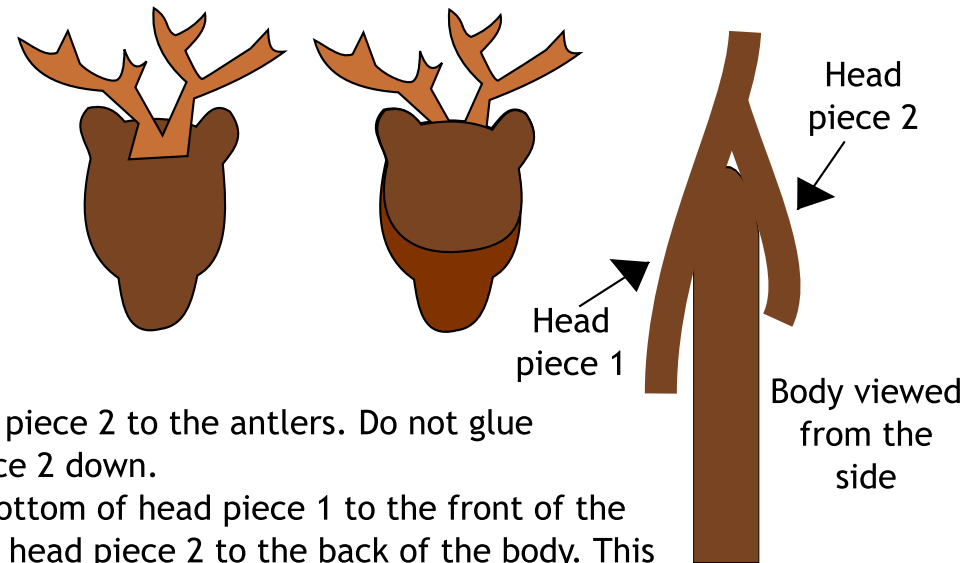
Template for Making a Reindeer Finger Puppet



- 1) Cut out the pieces and glue or sew the front and back of the body together.
- 2) Glue the nose onto head piece 1.
- 3) When dry, turn the head over and glue the antlers to the back.



Cut from red or black felt or craft foam



- 4) Glue the top of head piece 2 to the antlers. Do not glue the bottom of head piece 2 down.
- 5) When dry, glue the bottom of head piece 1 to the front of the body and the bottom of head piece 2 to the back of the body. This will help keep the antlers upright.
- 6) Add goggle eyes.

Do not play with your puppet until it is completely dry!

